



THE WORLD'S MOST COMPREHENSIVE PRESS BRAKE TOOLING SOLUTIONS



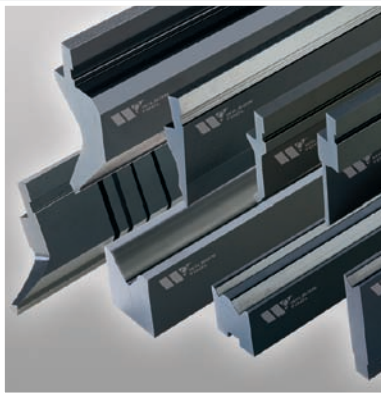
Strength. Performance. Innovation.

IMPROVE YOUR PERFORMANCE WITH E

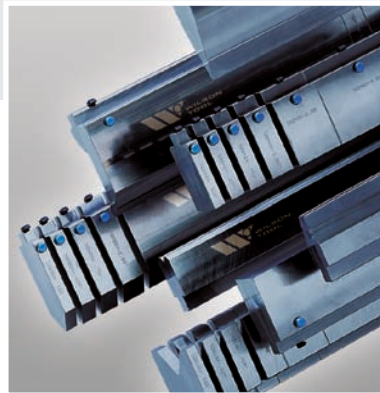
A complete range of press brake tooling solutions.

Wilson Tool leads the industry with precision, performance and innovation. With a full selection of European style, American Precision®, WT Style Precision™ press brake tooling and clamping technology, we manufacture state-of-the-art precision ground tooling and groundbreaking clamping systems that enable our customers to be the best fabricators in the world.

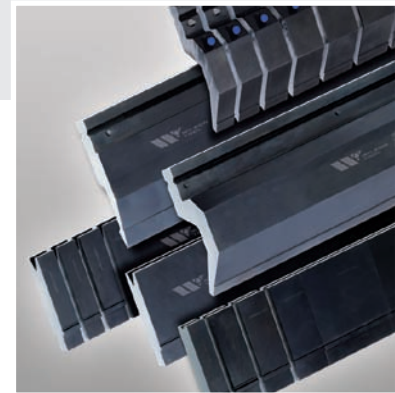
We are the first and only manufacturer to offer staged bending for ultimate versatility and efficiency. Our advanced hydraulic clamping system is the most reliable in the industry and our exclusive Nitrex™ surface enhancement dramatically increases tool life. With each new technology we introduce, Wilson Tool continually raises the bar for reliability, performance and increased productivity.



European Style



American Precision®



WT Style Precision™

Our cutting edge bending technology dramatically increases press brake productivity.

Wilson American Precision incorporates ingenuity and state-of-the-art manufacturing for a one-of-a-kind design that's faster to load and more versatile than any other American style press brake tooling available today. Unlike any other tooling, Wilson American Precision's innovative consistent closed height makes stage bending possible. Staged bending, quick tool changes and unmatched durability combine to make Wilson American Precision the single most innovative press brake tooling on the market.

To further maximize American style press brake productivity Wilson Tool engineers created the revolutionary PowerExpress™ hydraulic clamping system. This unique hydraulic system makes tool changes faster than ever before by enabling operators to





BREAKTHROUGH BENDING TECHNOLOGY

clamp and seat virtually any American style tooling in a single operation. One touch pendant control activates the hydraulic clamping action, which automatically clamps and seats tools in a matter of seconds.

Longer tool life, less scrap and quick set-ups are what make the Wilson Tool European Style press brake tooling the first choice of fabricators worldwide. When used with the Wilson Express Clamping System™ most European style tooling can be changed in a matter of seconds, saving you time and money. We also offer the world's largest selection of Quick Change 2V and 1V dies.



With WT Style Precision press brake tooling, Wilson Tool has developed an extremely durable and efficient tooling solution. Wilson's innovative push button, locking loading and unloading mechanism makes tool changes faster and significantly improves press brake productivity. WT Style press brake tooling is precision ground to a tolerance of +/- .0004" (.01mm) on all critical dimensions for reliable performance and accurate results. Available standard (19.7"/500 mm) and sectionalized (41.3"/1050mm) tooling can be mixed and matched for consistent bending quality.

Our exclusive Nitrex high endurance surface enhancement is standard on all press brake components and increases press brake tooling life by several times that of ordinary tooling. Wilson's patented process provides a surface hardness of HRC-70, increasing long-term durability and minimizing galling in even the toughest bending situations.



Boost your bending performance with Wilson Tool.

Unmatched durability, unparalleled customer service and an unwavering commitment to innovation make Wilson Tool the clear choice to increase your uptime and reduce your costs.

For more information, call 800.445.4518 or visit www.wilsontool.com/bending.



Strength. Performance. Innovation.

PRECISION TOOLING. UNBEATABLE PERFORMANCE.

For more than 40 years, Wilson Tool International® has provided industry-leading tooling solutions that enhance the performance of sheet metal fabricators worldwide.

The three divisions of Wilson Tool – Punching, Press Brake and Stamping – represent the most comprehensive line of tooling systems and accessories available. Our ability to consistently provide innovative, high quality products that outlast and outperform the competition is why the world's most successful fabricators rely upon Wilson Tool tooling systems.

A knowledgeable global sales force, multilingual customer support staff, same-day shipping and extensive distribution network are just a few of the benefits that keep our customers coming back time and again.

The e-Business Center at www.wilsontool.com/ebiz makes doing business with Wilson Tool more convenient than ever before. Request a quote. Place an order. Review your account history. Track a shipment. With Wilson Tool e-Business, everything you need is right at your fingertips – 24 hours a day, 7 days a week.



Strength. Performance. Innovation.

Press Brake Division

Tel (Free): 800.445.4518
Fax (Free): 800.539.4590
Email: pressbrake@wilsontool.com

www.wilsontool.com

Wilson Tool International, Inc. United States

12912 Farnham Avenue
White Bear Lake, MN 55110 USA
Tel (Free): 800.328.9646
Tel: 651.286.6001
Fax (Free): 800.222.0002
Fax: 651.286.5959
Email: marketing@wilsontool.com

Wilson Tool International, Ltd. United Kingdom

Stirling Road, South Marston
Industrial Estate, Swindon,
Wiltshire, SN3 4TQ England
Tel (Free): 0800-373748
Tel: +44 1793 831818
Fax (Free): 0800-373758
Fax: +44 1793 831945 or 46
Email: sales@wilsontool.eu.com

Wilson Tool International China

No. 6 Building of 58
4018 Lane Huaning Road
Xinzhuan Industrial District
Shanghai 201108 China
Tel: +86 21 51089638
Fax: +86 21 64422195
Email: sales@wilsontool.cn

Wilson Tool International Germany

Gottlieb Daimler Str 2
31552 Rodenberg, Germany
Tel (Free): 00800-9457668665
Tel: +49 5723 747 0
Fax (Free): 00800-945766329
Fax: +49 5723 747 10
Email: verkauf@wilsontool.eu.com

Wilson Tool International A/S Denmark

Islevdalvej 100
DK-2610
Roedovre, Denmark
Tel (Free): 80 20 20 24
Tel: +45 44 53 1699
Fax (Free): 80 20 20 26
Fax: +45 44 53 0607
Email: sales@wilsontool.dk

Wilson Tool International France

Bat B
51 Rue D'Ourdy
77550 Réau, France
Tel: +33 (0) 164 13 47 80
Fax: +33 (0) 164 13 47 81
Email: ventes@wilsontool.eu.com