

## PRECISE, RELIABLE RESULTS

The Xtreme Punch by Impax Tooling Solutions®, a division of Wilson Tool International, is manufactured to withstand your toughest stamping applications. Wilson Tool has reengineered the industry's highest quality precision punches for use in high-volume, high frequency stamping applications using heavier and exotic materials. This design directs stamping forces through the punch shank and away from the edges - virtually eliminating the most common cause of head failure when stamping heavy gauge and high tensile material.

Xtreme punches feature increased head thickness (.3125"), increased under head radius (.045 - .055") and a 10° taper on the top of the head that is equal in diameter to the punch shank.

### Strength That Can't Be Beat

Our state-of-the-art CNC manufacturing process and proprietary tool steels create punches with a level of durability and precision unmatched by similar products. Every Xtreme punch is manufactured using Wilson Tool's Ultima® tool steel, which is specially formulated to increase performance and wear resistance. No matter how tough your application, our Xtreme punches will continue to deliver precise, reliable results hit after hit.

### Speciality Coatings for Ultimate Punch Life

Coating technology can boost tooling performance to levels far beyond that of untreated tool steels. Xtreme punches can be treated with a variety of Wilson Tool's exclusive speciality coatings engineered to help stampers achieve higher levels of performance.

- **Optima®** coating provides a micro hardness (HV) of 3500 which increases tool life by as much as 5-7 times.
- **OptimaX** is a two part coating process that offers all the wear resistance and hardness of Optima, plus it provides added lubricity and further reduces galling.
- **Forte®** is a multi-layer nano coating for high-pressure applications and punching and forming for high and low alloy steel in all thicknesses. Its lower application temperature results in no dimensional changes.
- **Wilson CrN** is ideal for less demanding applications such as stamping plastics, copper or aluminum alloys and certain galvanized materials.

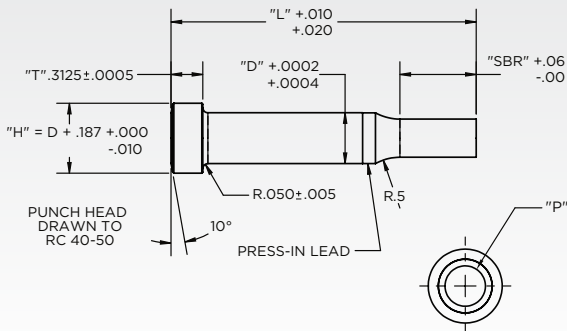
With longer tool life, more hits between sharpening and less galling, Wilson Tool speciality coatings reduce your downtime and improve your stamping performance.



# XTREME PUNCH

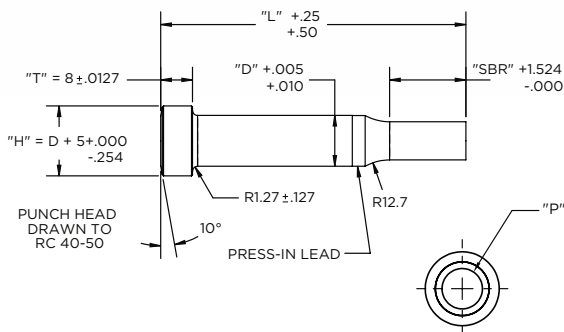
## Impact Your Stamping Performance with Xtreme Punches by Impax Tooling Solutions®

Xtreme punches are available in standard and special shapes in both imperial and metric sizes for all your toughest stamping applications.



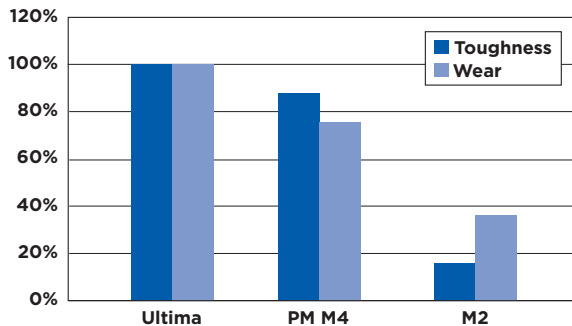
IMPERIAL	STYLE CODE	HEAD THK (PT)	SHANK [D]	Overall Length [L]									
				200	225	250	275	300	325	300	375	400	
ISPX IEPX		.3125	37										
			50										
			62										
			75										
			100										

Alternate sizes available upon request.



METRIC	STYLE CODE	HEAD THK (PT)	SHANK [D]	OVERALL LENGTH [L]					
				50	60	70	80	90	100
MSPX MEPX		8mm	10						
			13						
			16						
			20						
			25						

Alternate sizes available upon request.



### Ultima® Tool Steel Testing Data

In side by side testing, Wilson Tool's Ultima tool steel demonstrated superior performance over the other materials normally used in tough applications. Ultima demonstrated:

- 86% more toughness than M2 and 11% over PM M4
- 64% greater wear resistance than M2 and 25% greater than PM M4

For more information, visit [wilsontool.com](http://wilsontool.com), call our tooling technicians at 800-944-4671 or contact your Sales Engineer.

© 2017 Wilson Tool International. All rights reserved. S415F (9.2017)

