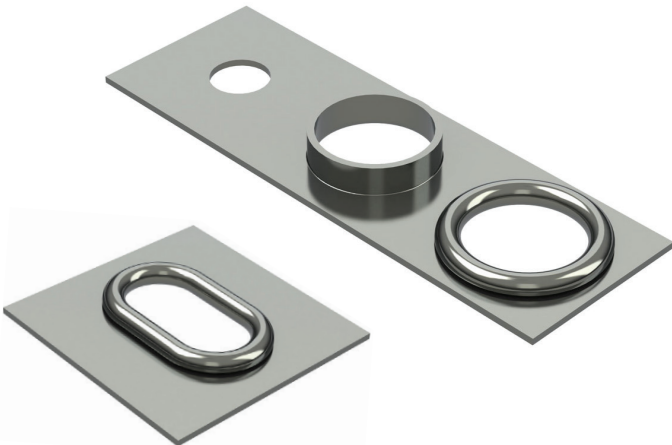
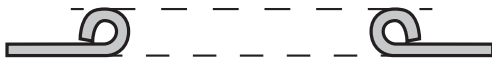


ROLLOVER TOOL (ROUND OR SHAPE)



Rollovers usually require three (3) tools:

1. Pre-punch
2. Form-up Extrusion
3. Rollover



Contact Information

Your Name _____

Phone _____

Company _____

Order Information

Material Type

(eg: Aluminum) _____

Material Thickness

(eg: 1.6mm or .060) _____

Machine Type

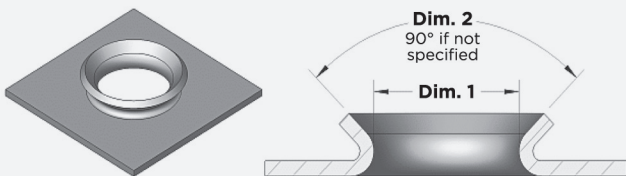
(eg: Amada-Pega 357) _____

 **Click to email form. Attach file to ensure quote accuracy (relief may be required).**

ROUND FLARE

Standard tolerance on the thru hole is ± 0.025
Tighter tolerance is available. Consult our Tooling Technicians.

If the tolerance requirement is equal to or less than ± 0.002 , sample material must be provided before the tool is designed.



Questions | Changes | Comments